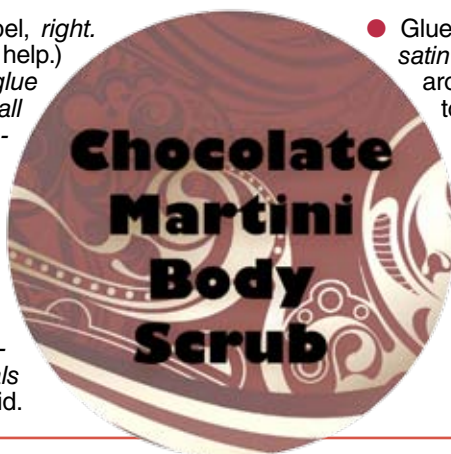




Chocolate Martini Body Scrub package and label

- Print and cut out label, *right*. (Manicure scissors will help.) Use *Beacon Gem-Tac glue* to decorate with 16 *small flatback Swarovski crystals in topaz AB*. Apply glue with a toothpick. (Tweezers will help with placement.) Use *double-stick tape* or glue to stick label to a *plastic cocktail shaker*.
- Glue 16 *medium flatback Swarovski crystals in topaz AB* around the lid.



- Glue *5/8" chocolate brown satin ribbon (get 1 1/2 yds.)* around the shaker near the top. Tie a multi-loop bow with the remaining ribbon and glue on.

Package design: Jennifer & Kitty O'Neil (ONeilSisters.com). Photo: Robert Milazzo.
 Beacon Adhesives:
 BeaconCreates.com or
 800-865-7238. Swarovski
 rhinestones: Create Your
 Style with Swarovski
 Elements: EKSuccessbrands.
 com or 800-794-5866